

round  
about  
café 

round about café

more than just  
tea and coffee...

round  
about  
café 

A year at

# Round About Café

2022 - 2023

Round About Café is run by Abri, one of the  
largest housing providers in the south







# Welcome

to another year at the Round About Café. We want to share some of the wonderful outcomes from the café this year. What a strange few years it's been! We've gone from a takeaway only service during lockdown to reopening the café with a fresh new look and our very own community pantry. The café has always been a hub of activity for the local community, and we've seen many returning customers as well as welcoming new faces. I can't believe that this is my ninth year at the café, meaning we're fast approaching ten-year anniversary of the café in the community. The café would not be where it is today without each one of our customers and dedicated volunteers, who offer their own time to support the café. So thank you to each and every one of you.

It has been amazing to see the café grow over the years, from when we started as the little café near the roundabout that many people drove past without knowing we were here. To becoming the hub that it is today, a place for people to come and have a chat and meet new friends. During the Covid lockdown we were a hub for providing food to the community via our foodbank covering 25-30 households each week. Once we reopened for takeaway only service, we gained a lot of new customers and, we continued to give away free food on our Fareshare table. Near the end of our take-away only service we started asking our customers about setting up a community pantry to provide food at a fraction of the cost of supermarkets.

Since we reopened fully at the Café in January 22, we've hit the ground running - providing great food and drinks at low prices, but still using our great quality food to help support customers. Our community pantry has gone from strength to strength, helping people with a top up shop each week for only £3.50 for 10 items or £5 for 15 items. We've had a wonderful time focusing on providing the activities such as board game café or our crafting group to name a few. We've also worked with the NHS to provide covid vaccines and Sid the pharmacist for flu jabs.

I look forward to welcoming even more people into the café and pantry over the next year.

**Nigel Powney**

Café Supervisor

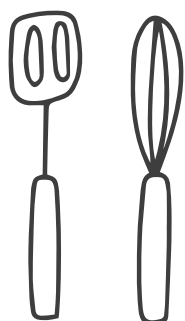
No of volunteers

**10** 

**Café 55**  
footfall **20**

**Café sales**  
**£32,815.77**

**Training**  
places **20**



**55**  
Buffets

**Buffet sales**  
**£4,471.25**

**177** **Pantry**  
members



**Pantry takings**  
**£3274.75\***

**Social value Confirmed**

**£6,106.90 Q1&2**

(Unconfirmed £54,330 Q3&4)



**Interventions**  
delivered **15**

**People**  
accessed **360**  
**intervention**

**874** **Total**  
pantry shops

**Food saved  
from landfill**

**8,000kg**

**same weight  
equivalence as a**

**T-rex**



**or**



**333 Springer  
Spaniels**

Social value is a term for capturing the full net value an organisation provides to society. This can include how an organisation supports the local economy, for example by helping local people into employment or buying from other local businesses; or activities that provide other benefits, such as promoting opportunities for disadvantaged groups or reducing waste. Another way to think of it is as a social and environmental return on investment. For every £1 you generate, how many pounds in wider value are created for society?

\*we're not-for-profit, so all our sales go back into the café and supporting the community

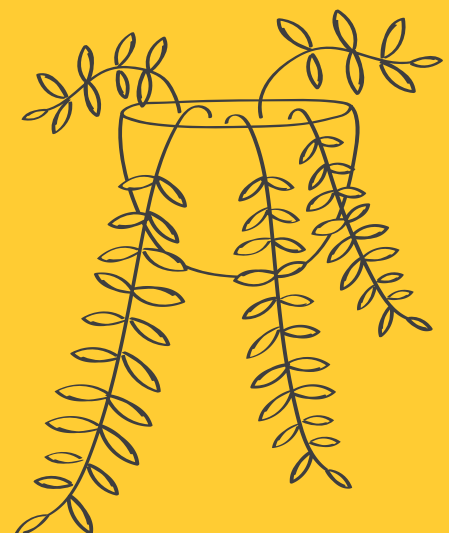
# Cost of living support

Round About Café is not only a café but a community hub where we support people by offering events, activities and training. We tailor what we offer by listening to what you tell us you enjoy, what there could be more of in the area and what you would like to get involved in.

We understand that money is a big issue at the moment and the cost of living crisis is affecting more and more people, so we've been re-focussing our work to help provide more support to the community.

Over the last year we ran one off and regular events including:

- crafternoon and board game sessions
- neighbourhood storytelling events
- winter flu and Covid-19 vaccinations
- a Man with a Pan cooking course
- Mansbridge Melody Makers singing group
- a seed swap event
- Level 2 Food Safety and Hygiene training



# Community Pantry

We opened our Community Pantry in January 2022. We set the pantry up with the goal of reducing the amount of food going to landfill and to support the local community accessing food at a fraction of the cost of supermarkets. Members are saving, on average, £20 when buying 10 items, and £35 when buying 15 items.

We aimed to sign 10 members up in the first week, but we were pleased to sign up 12 members in the first day. Since then, the pantry membership has grown to 177 members (end of March 2023). The food is provided by FareShare, who distribute surplus food from supermarkets. We also receive small donations of food from members of the community and local businesses.

## **We've had some lovely feedback from members:**

**"There is usually something for everyone. We are vegan and there is often food for us."**

**"Sometimes it's a lucky dip, but for the cost its always value for money."**

**"It's nice to have the Round About back after Covid and I look forward to better weather so I can venture out more often!"**

**"It's good to come to, I feel comfortable and enjoy the company and community."**

**"Good variety, always enjoy coming to the Pantry."**

**"It's great to try different types of food items that you wouldn't normally buy or which would be out of your spending budget."**

**"The Pantry is a great idea and keep up the good work and thank you."**



The Pantry is open to anyone that lives has an SO postcode. It costs £1 a year to join. You can shop once a week and choose 10 items for £3.50 or 15 items for £5. Our delivery comes on a Tuesday. Pop into the café and we can fill out a membership form with you.

# Mansbridge Mending

In March 2023 we started a new project called Mansbridge Mending which involves regular free clothing alterations and repairs service and an electrical repair café. We're also planning regular clothes swaps in the future where you can bring items you no longer wear and swap them for something different. By repairing, fixing or swapping things that would otherwise be thrown away, it saves money and reduces items being sent to landfill.

In two hours we took up three pairs of trousers, repaired a coat pocket and seam, and patched two pairs of trousers. This saved £86 compared to paying to be professionally mended. Although, this cost would be a lot more if the owners had to replace the items they brought along to be mended.

Two electrical repairs were done, one was an old CD/radio player which just needed a good clean and the other was a sewing machine that hadn't been used for two years. Both owners were very happy that they could now use their items instead of being sat around doing nothing or having to send them to landfill.

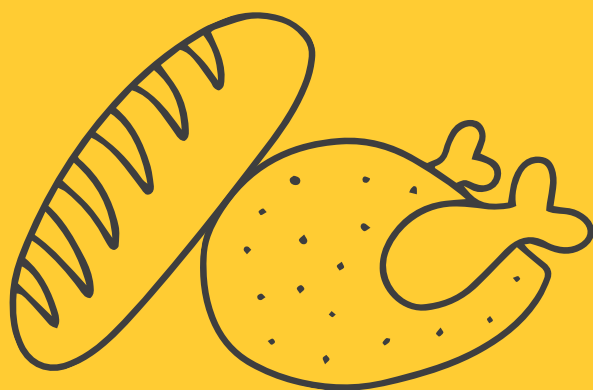




# Savvy Slow Cooking

Did you know, slow cookers are the most cost-effective way of cooking meals, costing up to 40p to run for eight hours? In April 2023 we started a cookery course at Kelly House where we show how to cook healthy, nutritious food using a slow cooker. Throughout the year we will be offering more cookery courses using a variety of methods to help you save money and cook on a budget. Depending on the course, they may be at the café or another local venue if we need more space.

Keep an eye on our social media for upcoming events and activities. If you would like more information, please contact your local Community Development Officer, Cara Headon, on **07769241365** or **[cara.headon@abri.co.uk](mailto:cara.headon@abri.co.uk)**



# Our volunteers

We couldn't run the café without the support of our amazing volunteers. From cooking to cleaning and supporting with the many events and activities the café hosts, they're a busy bunch. If you're interested in volunteering, get in touch with Nigel, our Café Supervisor by emailing [Nigel.powney@abri.co.uk](mailto:Nigel.powney@abri.co.uk) or calling 02380672700.

## Shirley

Shirley has been volunteering at the café for nine years.

"I love volunteering here as I enjoy talking to the customers and it gives me a chance to get of the house. We put on raffles and tabletop sales to raise money for community activities. We applied for a local fund of money and used the money to install a community noticeboard to raise awareness of local activities and businesses. We also had two bike racks fitted so customers can safely leave their bikes when visiting the café."



## Sara

Sara has been volunteering for the last year, helping with the Community Pantry. She got involved as her partner had joined the Pantry and suggested she go along and see what it was all about.

"I was in a bad place and didn't like to go out and socialise. It took me eight weeks to make the visit, but now I'm here every Tuesday helping members. Everyone is so friendly and I'm saving money as well as I use the pantry every week and also pick up food for my daughter."







## **Thanks to our partners for their help and support over the last year**

SoCo Music Project  
Southampton City Council  
FareShare  
Three Rivers Partnership  
Solent NHS Trust  
STAMP Minded  
Carers in Southampton  
Darn it and Stitch  
Southampton Repair Café  
Compassionate Cuppa  
Touch Network  
SO:LLinked  
TWICS  
Community Chef  
Southampton Voluntary Services  
Zoellogic  
University Health Service  
The Happy Healing Hut

- Round About Café, 12 Westfield Corner, Mansbridge, Southampton, SO18 2LE
- 023 8067 2700
- [www.roundaboutcafe.org](http://www.roundaboutcafe.org)
- [cafe@roundaboutcafe.org](mailto:cafe@roundaboutcafe.org)
- [/roundaboutcafesoton](#) (facebook)
- [@roundaboutsoton](#) (twitter)
- Monday – Friday 8am – 2pm
- [@roundaboutcafe](#)

Community pantry is open while the café is open, however, we receive our food delivery on a Tuesday

Supported by Abri, one of the largest housing providers in the south